

DEFINITIONS

Retail Customer — A person who purchases Symmetry products who has not joined as a P.C.

Suggested Retail — The amount at which Symmetry recommends you resell the products to the customers who do not wish to commit to the minimum 30 Personal AutoShip Points per month. This price represents a 30% + mark up profit to a Business Partner.

Preferred Customer (P.C.) — P.C. are the purchasers of Symmetry products who have made a commitment to generate or produce a minimum of 30 Personal AutoShip Points per month and paid a membership fee. For making this commitment, they are able to purchase all Symmetry products at the P.C. cost, are part of their enroller's organization, and are eligible for additional benefits.

Business Partner (B.P.) — A Marketing Representative or above who has made the decision to develop Retail Customers and a network of P.C. and B.P. and has purchased either one of the Business Packs or a Marketing Representative literature kit as well as having committed to generating or producing a minimum of 30 Personal AutoShip Points per month.

First Level — A P.C./B.P. who is placed directly below you, whether or not you personally enrolled them.

Points — The value of each product as it relates to the Symmetry compensation plan and its qualifications.

Commission Value (CV) — This is the amount on each product which commissions, rebates and bonuses are calculated. **Bonus CV** = After an active PC/BP personally generates over \$400 CV, a bonus CV amount is used as the basis for commissions. This Bonus CV amount is based on 50% of the CV listed on price list for each product.

Organizational Points — The points created by P.C./B.P. beginning their second month.

Inception Points — The points created by a new P.C./B.P. in their inception month.

Total Monthly Points (TMP) — The combined total of your Personal Points, Organizational Points and Inception Points (Inception points may only be added if you have 100 Personal AutoShip Points.)

Inception Month — The calendar month in which the an application is accepted by Symmetry Corporation.

Personally Enrolled Leg — Each P.C./B.P. enrolled by you creates a personally enrolled leg. This is the linkage created exclusively by your personal enrollees and their personal enrollees.

Active — You are considered 'active' if you are meeting all of the requirements for any level.

First Full Sales Month — The first full calendar month immediately following the inception month.

Active Enrollees — Your personal enrollees who are generating or producing a minimum of 30 Personal AutoShip Points per month.

Standing Order Program — A Standing Order Program is a way of fulfilling your commitment to generate or produce a minimum of 30 or 100 Personal AutoShip Points per month. There are two types, AutoShip and Back Up Order.

• **AutoShip** — To purchase Symmetry products at P.C. prices and/or participate in our compensation plan, you must commit to generating or producing a minimum of 30 Personal AutoShip Points from Symmetry each month. Simply complete the P.C. Application or B.P. Agreement (depending on the level at which you wish to join) and provide your credit or debit card information. Then let us know the products you wish to receive each month and we do the rest. We will ship your products to you each month at the same time.

• **Back Up Order** — To maintain minimal inventories necessary for demonstration purposes, retail sales and personal use, we have created a Back Up Order system. You simply choose the products you want and we will keep your order on file. If, by the 25th of the month, Symmetry finds that for any reason you have not placed your full monthly order, we will automatically process and ship this order to you. To take advantage of this plan, you must have your credit or debit card on file with us.

Pins & Awards

In addition to published recognition, Symmetry Direct also rewards certain accomplishments with special pins and other awards, as listed below. (Please note: Recognitions, pins and awards are subject to change.)

Achievement	Award
Marketing Representative	= "S" pin – Silver
Marketing Manager	= "S" pin – Gold
Senior Marketing Manager	= Symmetry Gold pin
Field Vice President	= Symmetry Gold pin w/1 diamond
Area Field Vice President	= Symmetry Gold pin w/2 diamonds
Regional Field Vice President	= Symmetry Gold pin w/3 diamonds
National Field Vice President	= Symmetry Gold pin w/4 diamonds
International Field Vice President	= Symmetry Gold pin w/5 diamonds
Executive Field Vice President	= Executive Gold pin w/large diamond
Increase your active Personally Enrolled Marketing Manager legs	= Emerald in Symmetry Gold Pin

*Symmetry will make every attempt to give equal recognition for the achievements of our business partners, however, if no photograph is received only your name will be published. Photos must be received by the 20th of the month to be included in the next month's recognition. Photographs should be posed, and you should be dressed in relaxed business attire or more formal attire. Photographs can be sent digitally or as prints. Please send good quality images only; no Polaroids will be accepted. The quality of the photograph published will depend on the quality of the image that we receive. Send photographs to:

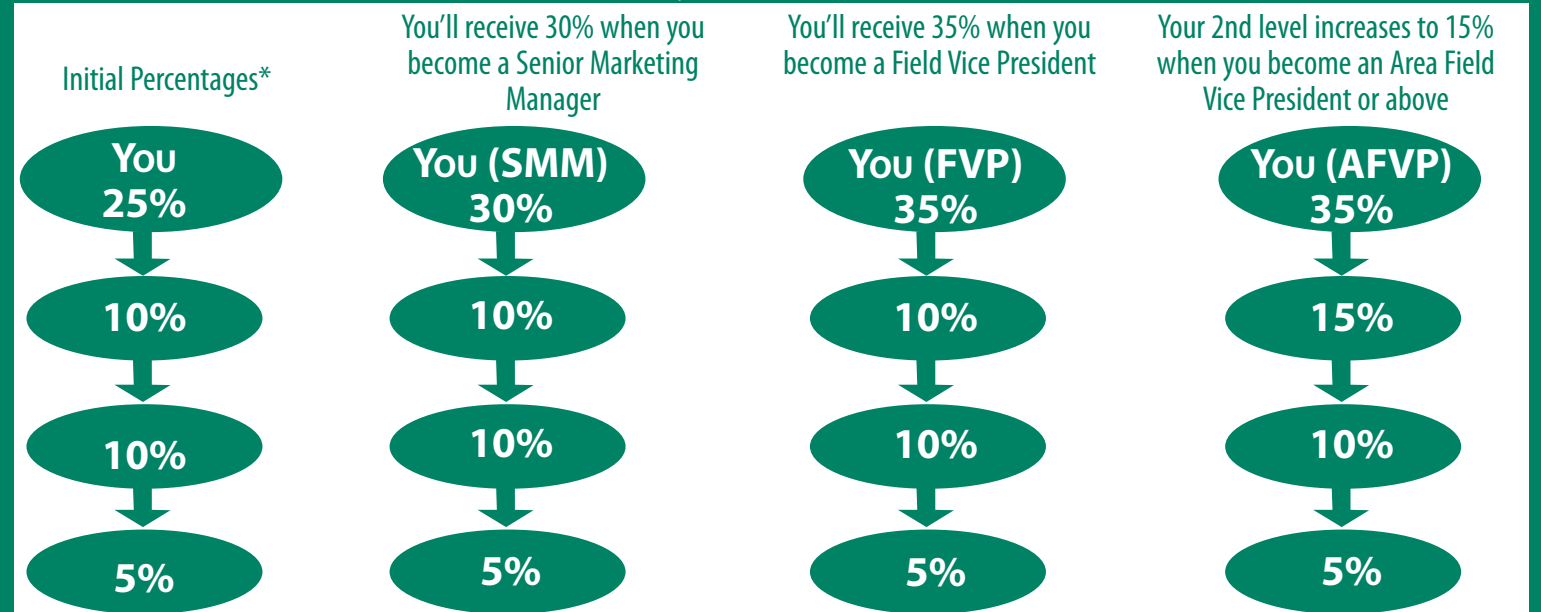
Symmetry Direct Recognition
420 S. Hillview Drive
Milpitas, CA 95035
or email to: recognition@symmcorp.com

©2009 Symmetry Corp. Rev 1.1 0905 Item #LT315

SYMMETRY

Intelligent Compensation

Weekly Rapid Income



*Must have 100 personal points in the previous month and purchased a Business Pack.

Monthly Residual Income

Rank	Preferred Customer Loyalty Check	Marketing Representative	Senior Marketing Representative	Marketing Manager	Senior Marketing Manager	Field Vice President	Area	Regional	National	International	Executive
							Field Vice President				
Development Requirement	**0 PE	**2 PE	**4 PE	**8 PE	**8 PE Total 2,000 Points	**12 PE 1 MM Total = 5,000 Points	**12 PE 2 MM 1 SMM Total = 10,000 Points	**12 PE 3 MM 2 SMM 1 FVP Total = 25,000 Points	**20 PE 3 SMM 1 FVP 2 AFVP Total = 50,000 Points	**20 PE 2 FVP 2 AFVP 2 RFVP Total = 100,000 Points	**20 PE 2 AFVP 1 RFVP 3 NFVP Total = 250,000 Points
Personal Points	30	30 / 100	30 / 100	100	100	100	100	100	100	100	100
1st Level	4%	4% / 10%	4% / 10%	10%	10%	10%	10%	10%	10%	10%	10%
2nd Level	4%	4% / 10%	4% / 10%	10%	10%	10%	10%	10%	10%	10%	10%
3rd Level		4% / 10%	4% / 10%	10%	10%	10%	10%	10%	10%	10%	10%
4th Level			4% / 8%	8%	8%	8%	8%	8%	8%	8%	8%
5th Level				8%	8%	8%	8%	8%	8%	8%	8%
6th Level					8%	8%	8%	8%	8%	8%	8%
7th Level						8%	8%	8%	8%	8%	8%
8th Level									2%	2%	2%
9th Level									1%	2%	2%
10th Level										1%	2%
11th Level											1%

Car Bonus



\$200 \$400 \$600 \$800 \$1000

One Time Achievement Bonus

\$250 \$500 \$1000 \$2500 \$5000 \$10,000 Trip \$100,000

** Has purchased a minimum of 30 pts in current month

Retail Customers

Benefits: Retail Customers enjoy improved health and well being by purchasing products directly from their Representative, direct from Symmetry using their Business Partner's name or through their Business Partner's Sym-e-site.

Preferred Customers (P.C.)

To Become a P.C., you must pay the annual membership fee with an initial order of at least 30 Points. Then monthly you must generate/produce a minimum of 30 Personal AutoShip Points.

Benefits: P.C.'s benefit from 30-60% savings on products as well as free shipping on orders. Additionally, they receive free product with a 100 Point AutoShip, *Vision Magazine* and other current health and fitness information. P.C.'s have access to the Symmetry customer center online, receive notification of product specials, and can potentially earn loyalty awards.

Business Partners (B.P.) (see chart)

Personal Income

Personal Retail Sales

You earn 30-60% mark-up profit when you resell product to a personal customer or have retail customer purchase from your **sym-e-site**. You can purchase products from Symmetry at a discounted price to create a customer network that purchases products from you at retail, as well as allowing you a discount on your own personal purchases. The retail profit that is represented by our Suggested Retail Price List will give you a 30%-60% profit of the P.C. Cost.

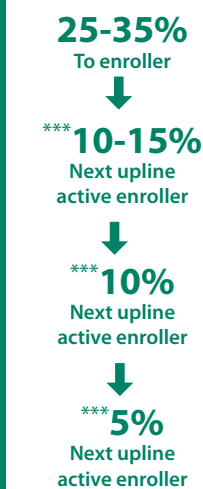
Personal Enrollers Introductory Commission

When you personally enroll a new P.C./B.P., you will receive 25-35% of the first 400 C.V. purchased by the new enrollee in that first sales month.

Rapid Income Bonus

You earn 10-15% rapid income bonus of the CV on all your 2nd level personal enrollees, 10% on all your 3rd level personal enrollees, and 5% on all your 4th level personal enrollees. This bonus is paid weekly and you must have purchased a GObox and have generated or produced 100 personal points in the previous month to qualify.

Weekly Enroller Rapid Income Bonus



***Must have 100 personal points in the previous month and purchased a Business Pack.

Please refer to "Weekly Rapid Income" chart on the front page

Business Pack Bonus

GOBox 3.0 = \$20.00
GOBox 6.0 = \$120.00

This is an additional bonus paid on each Business Pack to the enroller if Rapid Income Bonus qualified. If the enroller is not qualified for Rapid Income Bonus, this bonus is paid up to the first Rapid Income Bonus qualified in the personal linkage.

Quick Start Bonus

To qualify for this bonus you must, by the end of the first full calendar month following the original activation month,

- Be a B.P.
- Enroll 8 new P.C./B.P.

For doing this you receive \$100 bonus and published recognition.

Sales Performance Bonus Rebates

- You can earn a Performance Rebate of 25% on the Bonus CV of the over 400 Personal Points you produce monthly.
- When you generate/produce a minimum of 100 Personal Auto Ship Points, you will be paid on the Bonus CV over 400 CV generated by the P.C./B.P. in the levels on which you are qualified to earn.
- When someone you have personally enrolled earns a Personal Sales Performance Rebate in their Inception Month, you earn an Enroller's Performance Bonus, receiving a 10% commission of the Bonus CV generated by your personal enrollees as long as you have 100 Personal Auto Ship Points. This Bonus is paid on your monthly check.

Residual Income

Organizational Commission

When you are generating or producing a minimum of 30 Personal AutoShip Points per month, you will receive an organizational commission of 4% to 10% on up to 400 C.V. of the P.C.s/B.P.s on 2 to 4 levels of your marketing organization.

In addition after enrolling a minimum of 8 personal P.C., 100 personal points as well as maintaining 2000 organizational points monthly, this will increase to 10% on the first 3 levels and 8% on 4 more levels for a total of 7 levels.

Checks will be issued once a minimum of \$20 is reached.

Personally Enrolled Additional Commissions

As an Active Senior Marketing Manager (and when you have personally enrolled 9 or more P.C./B.P.) in addition to your Organizational Commissions you will earn a Personally Enrolled Additional Commission on the First 400 Organizational CV of your Personally Enrolled P.C./B.P. as per the table below.

# Of Active Enrolled	Amount of Increase	Total % Personally Earned
9 - 19	5%	13% - 15%
20 +	10%	18% - 20%

Monthly Car Bonus

A Monthly Car Bonus is paid to Active Area Field Vice Presidents (and above) each month that they are active at the appropriate level per the chart below.



- Area Field Vice President = \$200
- Regional Field Vice President = \$400
- National Field Vice President = \$600
- International Field Vice President = \$800
- Executive Field Vice President = \$1,000

One Time Achievement Bonuses

When you attain higher positions, you will receive an award certificate. After you have been active at that position for 3 consecutive months, (One of those months may be the month in which you attained the status.) or when you reach a higher position, whichever comes first you will receive the cash bonus listed below:

- Senior Marketing Manager = \$250
- Field Vice President = \$500
- Area Field Vice President = \$1,000
- Regional Field Vice President = \$2,500
- National Field Vice President = \$5,000
- International Field Vice President = \$10,000 Trip
- Executive Field Vice President = \$100,000



Organizational Leadership Infinity Bonus

	National FVP	International FVP	Executive FVP
Level 8	2%	2%	2%
Level 9	1%	2%	2%
Level 10		1%	2%
Level 11			1%
Level 12			Infinity 1%
^{††} Executive Development			

Executive Development = Executive to Executive

An Executive to Executive Organizational Infinity Bonus will be 1% override paid to the personal enroller Executive Field Vice President on their personally enrolled Executive Field Vice President Leg from Level 11 to Infinity or until another Executive Field Vice President is developed.

Personal Active Titled Legs

This simply means that you must continue to develop successful B.P.s as you move up in the plan. As an example to be an Active Regional Vice President, you must have 6 Personally Enrolled legs who are Active Marketing Managers; 3 of those 6 must be Active Sr. Marketing Managers and of those 3, 1 must be an Active Field Vice President.

Mentor Infinity Bonus

Active Regional Field Vice Presidents earn a bonus equal to 10% of the Organizational commissions of the first Active Regional Field Vice President (or above) under each personally enrolled leg.



Growth Bonus Pool

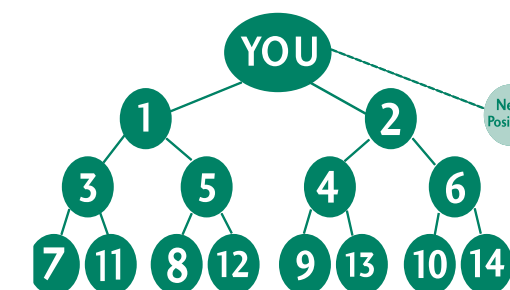
Two percent (2%) of the Total Company Organization commissions paid in the country of residence will be in a pool. The payout of this pool is based on the quarterly increase of total volume in a Regional Field Vice President's organization in that quarter. All Regional Field Vice Presidents & above who have increased their total points over their last highest quarter may be eligible to participate. These bonuses are only paid at corporate events to those who attend. The number of months in the quarter in which a RFVP is active as a RFVP is multiplied by the increase in the number of total volume over the last quarter to get a number of points per RFVP. To create a value per point the pool is then divided by the total points calculated. Each RFVP receives a bonus based on the number of points for their organization multiplied by the value per point.

Additional Rewards

Recognition

Additional First Level Positions

The new B.P. Inception Teams (the first 2 teams) are developed simultaneously. However, once your first two teams are filled and continue to remain active and you continue to personally enroll, a new first-level position is added. When that team develops to the third level, you earn a new first-level position. This process continues as long as you continue to personally enroll, maintain and fill out teams.



Free Sym-e-site

Sym-e-sites are included automatically with the purchase of any Business Pack. When you become an Active Marketing Representative by enrolling your first 2 P.C./B.P. and have purchased a Literature Kit, you will receive at no charge a Sym-e-site with your own unique URL you can use to conduct your Symmetry Direct business. You can personally enroll Retail Customers, P.C. and B.P., place orders, watch your volume grow, and keep track of your orders right from the comfort and convenience of your home.